

# Hybrid Approach to a Large Axillary Artery Pseudoaneurysm in an Infant

**BRYANT MCLAFFERTY, MS1**

**MALACHI SHEAHAN III, MD, FACS**

Division of  
**Vascular Surgery**

**LSU Health**  
NEW ORLEANS  
School of Medicine

# Disclosures

- None

# Disclosures

- None
- Any pictures of children which include facial features are shown with parental permission

# Case

- 3 month old Male
- Mother noted LUE larger than RUE
- Incidents of LUE blue/purple tint since 1 week old, improves with position change

# History

- PMH<sub>x</sub>:
  - C/S at 39 weeks
  - No known trauma, IV access
  - Up to date with vaccines
- PSH<sub>x</sub>:
  - None
- Soc:
  - none
- FH<sub>x</sub>:
  - No history aneurysms, pseudoaneurysm, sudden death, collagen vascular diseases, etc

# Physical Exam

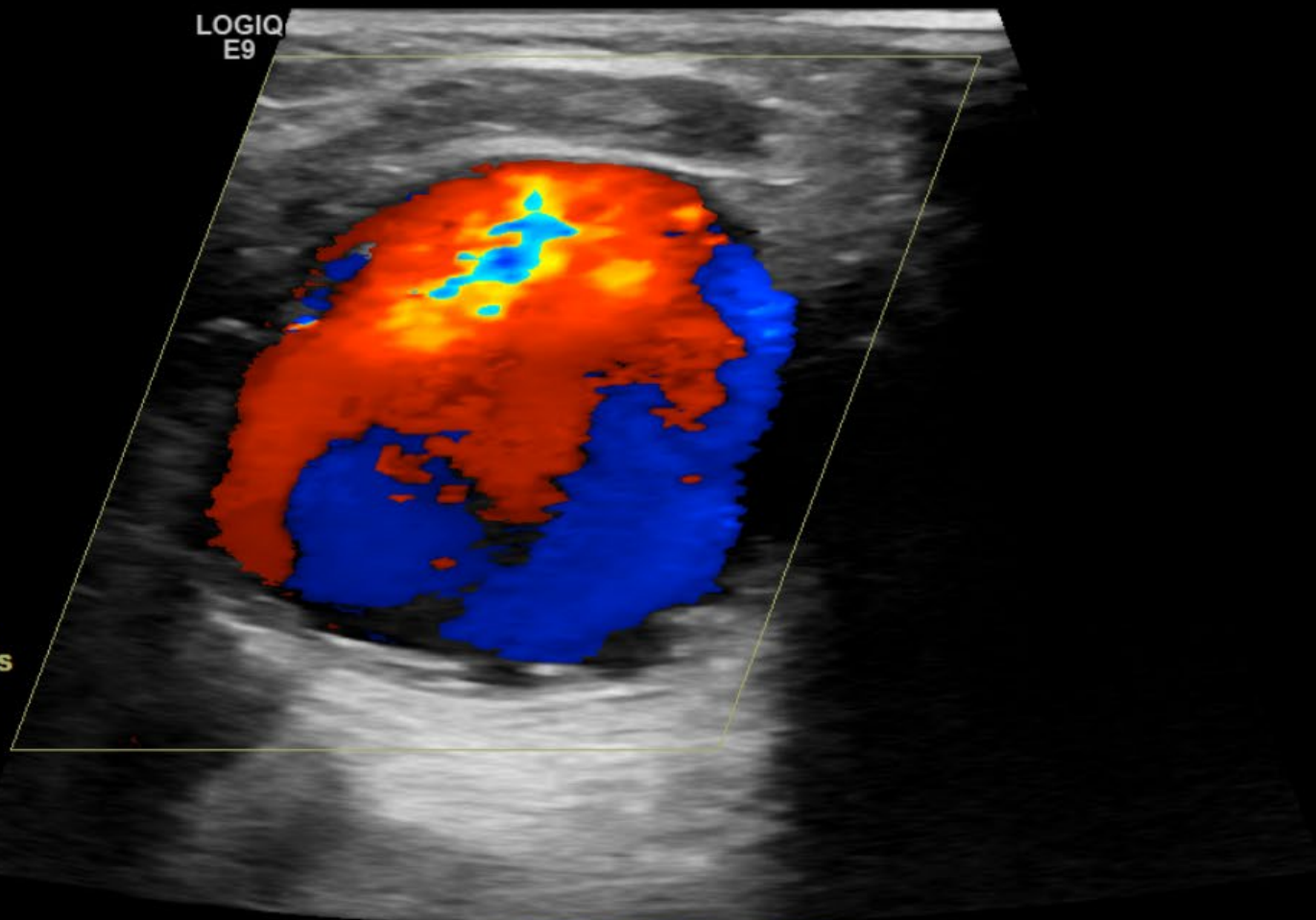
- Vitals WNL, weight 8 kg
- Awake, NAD
- Moves all extremities, good grip bilaterally
- No cyanosis, jaundice, edema
- Palpable 2-3 cm mass infraclavicular and transaxillary LUE
- Palpable radial pulses bilaterally



US



LOGIQ  
E9



LEFT SUBCL V MID

FR 15

0-

- CHI  
Frq 9.0  
- Gn 37  
D 6.0  
- AO% 100

2- CF

Frq 3.6  
- Gn 17.5  
L/A 0/7  
- PRF 2.0  
WF 163  
S/P 4/16  
AO% 100

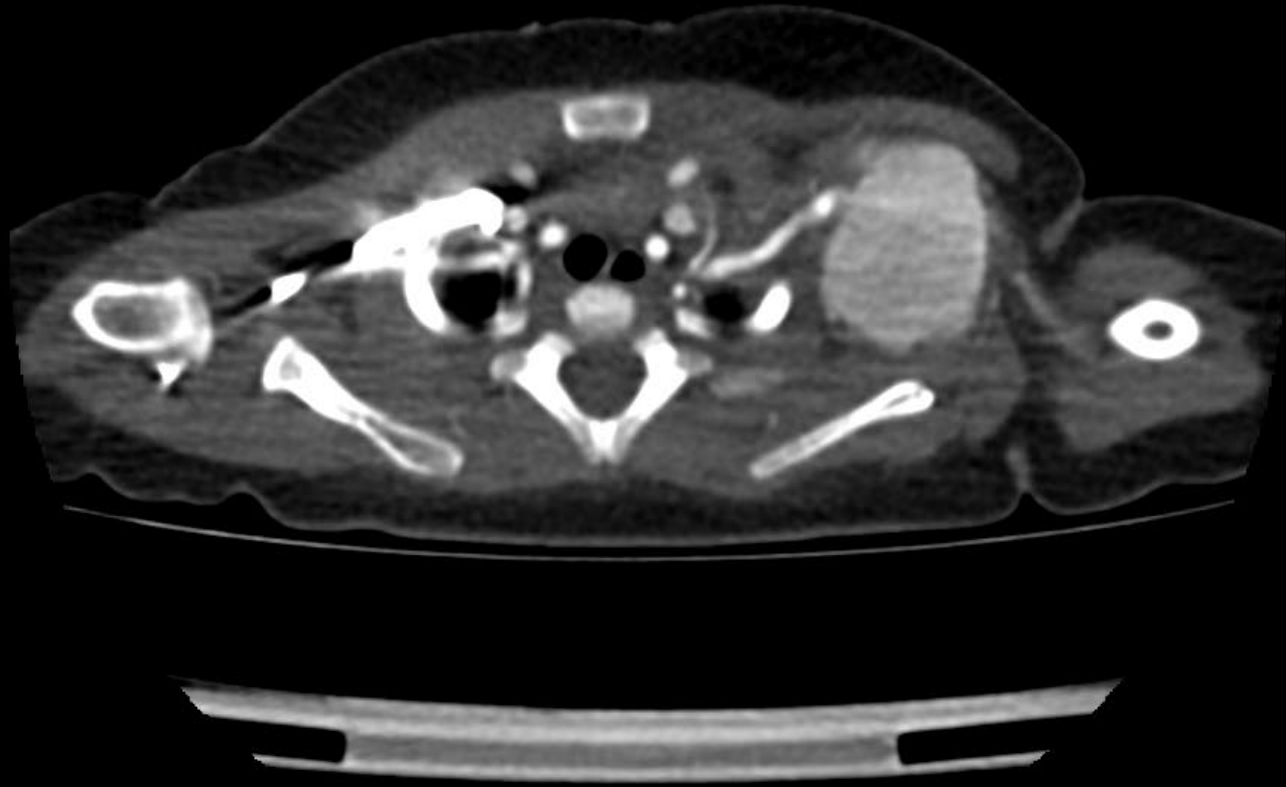
4-

6-

Z:1.18  
C:128  
W:256  
IM:4096

CTA

LOC:-178.50  
THK:3  
HFS



RD:226.25  
Tilt:0  
mA:170  
KVP:80  
Acq no:5  
33 of 139

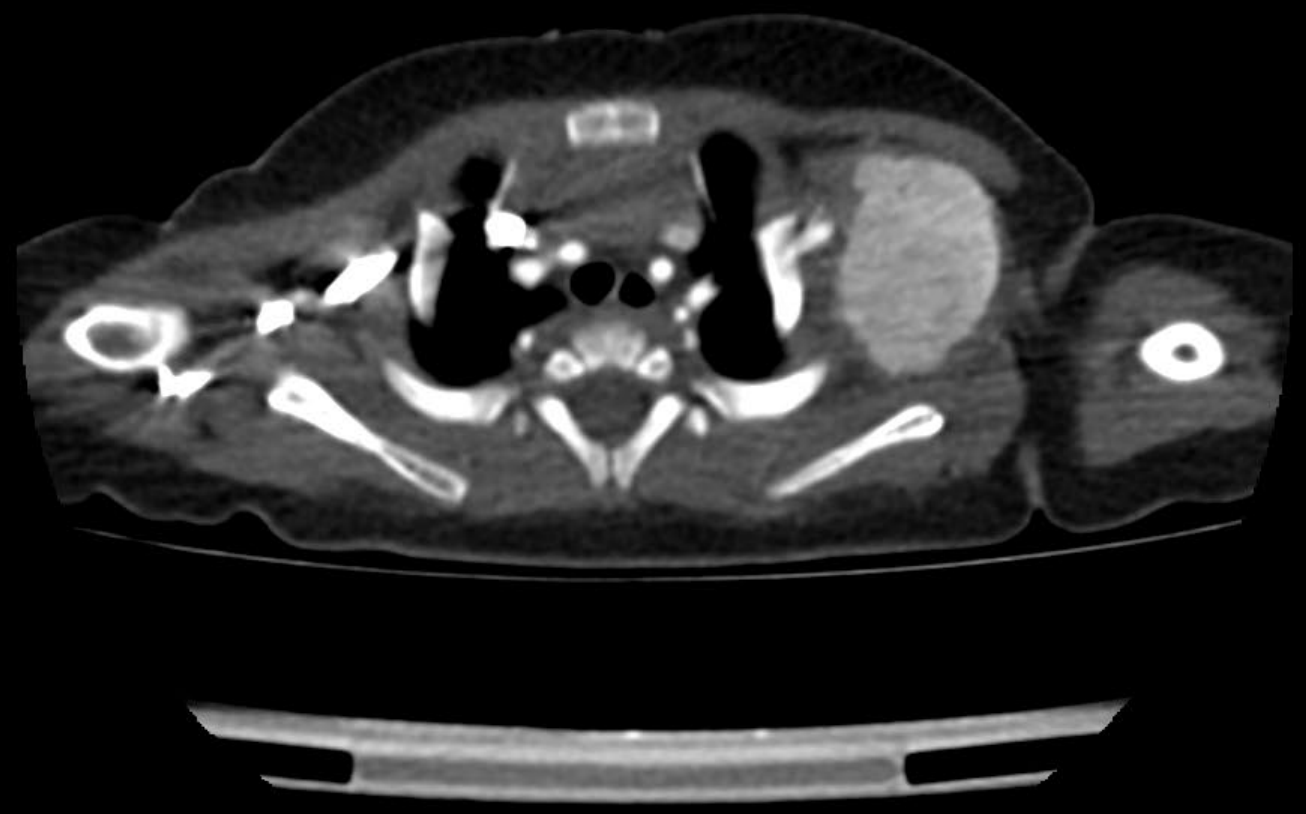
Z:1.66  
C:199.88  
W:748.05  
IM:33 SE:3

A

CTA 3.0 CE  
2017/06/20 11:47:43  
CE  
LOC:-181.50  
THK:3  
HFS

R

L



RD:226.25  
Tilt:0  
mA:170  
KVP:80

Z:1.66  
C:199.88

A

CTA 3.0 CE  
2017/06/20 11:47:43  
CE  
LOC:-190.50  
THK:3  
HFS



L

6.25  
0  
0  
15  
39

P

Z1.66  
C:199.88  
W:748.05  
IM:37 SE3

THK:18.78  
HFS



R



L

RD:226.25  
Tilt:0  
mA:145  
KVP:80  
Acq no:0  
4 of 10

Vitrea®  
Zoom:165%  
W/L:125/175  
Segmented  
VR: Base Color  
Z:0.86  
C:1.28  
W:256  
IM:4 SE510

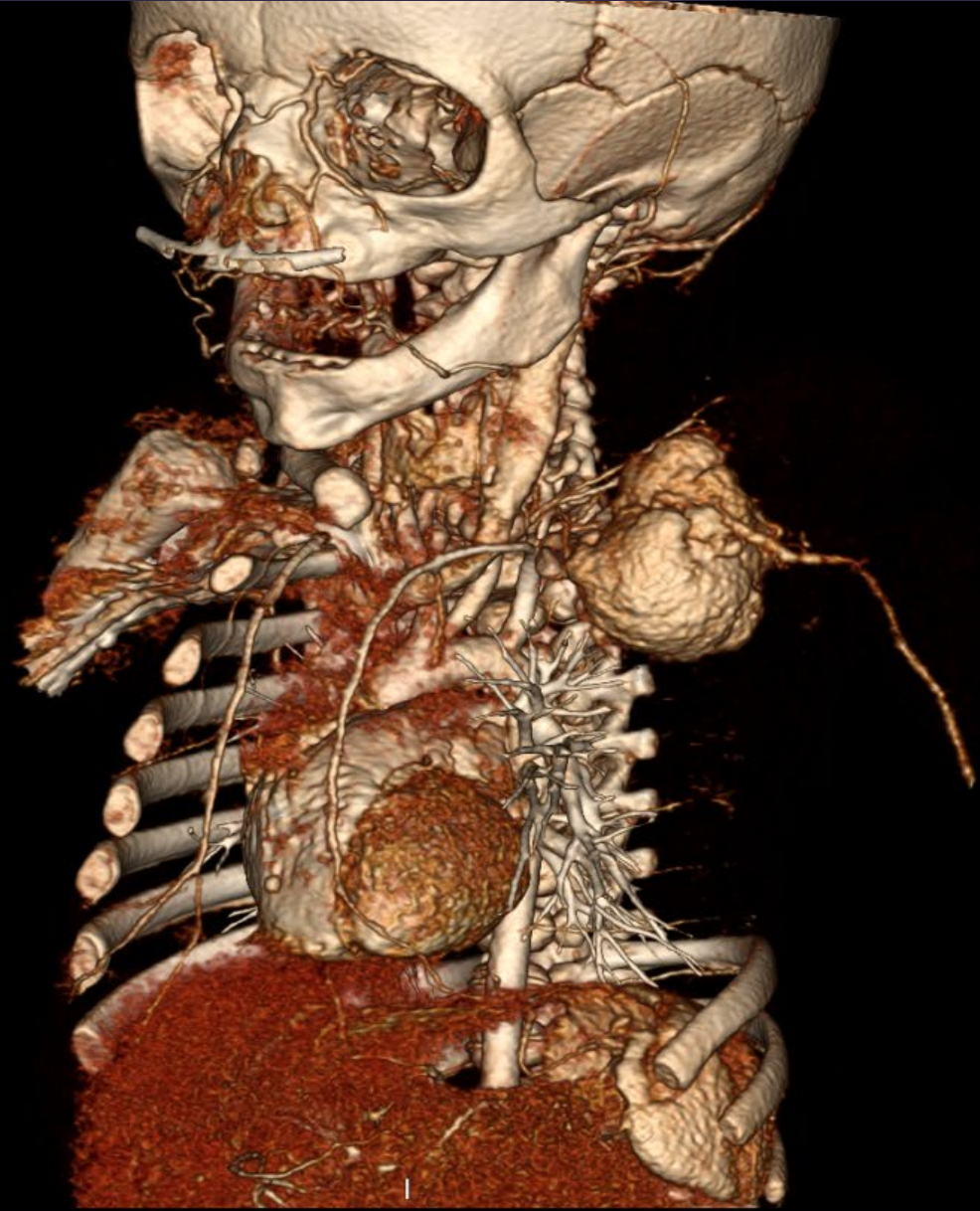


THK:18.78  
HFS



R

L



RD:226.25  
Tilt:0  
mA:145  
KVP:80  
Acq no:0  
9 of 10

Vitrea®  
Zoom:234%  
W/L:125/175  
Segmented  
VR: Base Color  
Z:0.86  
C:128  
W:256  
IM:9 SE510





LOGIQ  
E9



FR 34  
0"  
- CHI  
Frq 9.0  
- Gn 51  
S/A 4/1  
- Map H/0  
D 6.0  
2- DR 69  
AO% 100

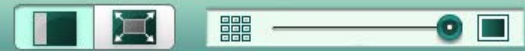


LEFT SUBCL ART

4"

6"

Z1.18  
C:127  
W:256  
IM:5888



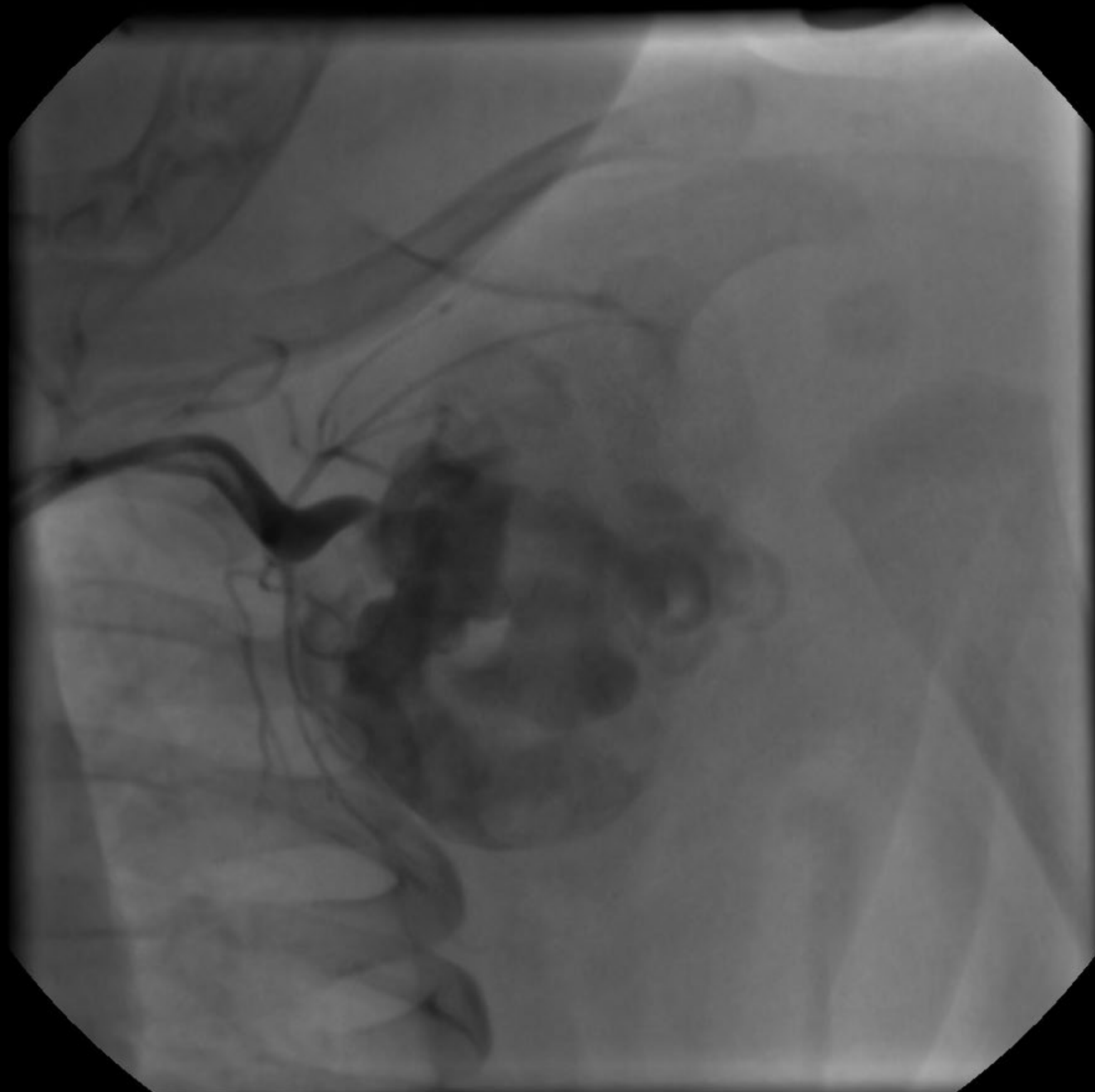


# Angiogram

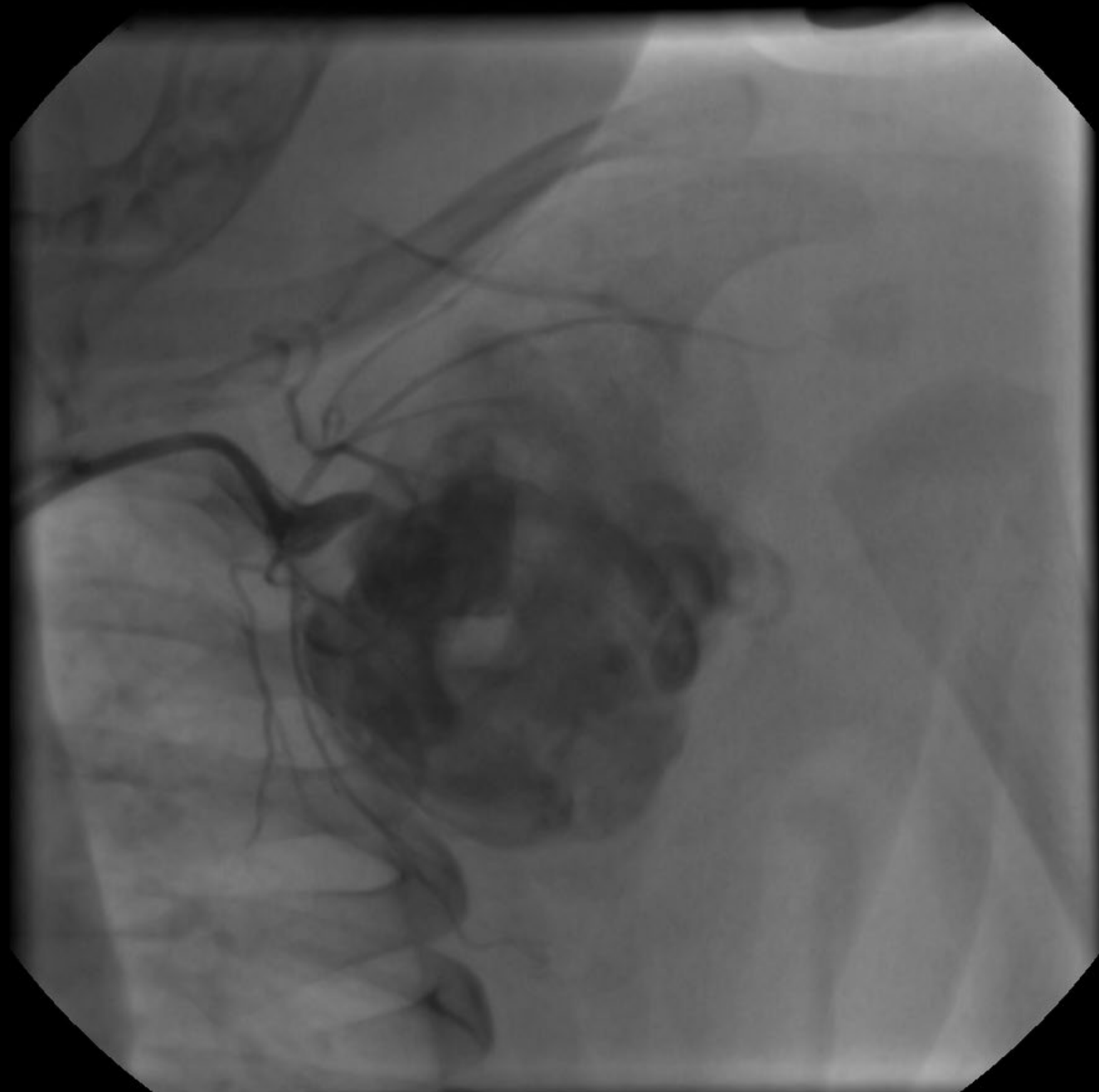












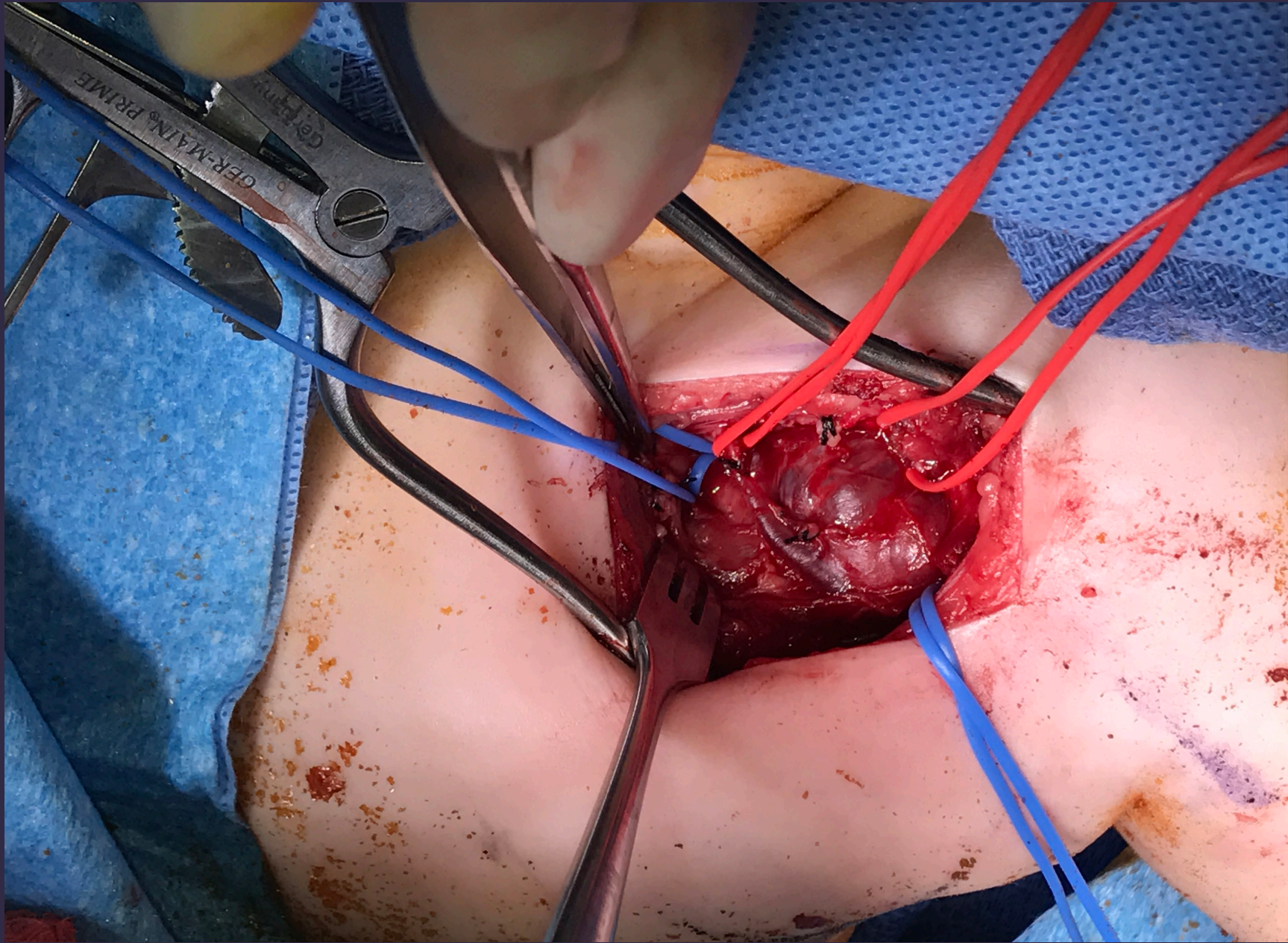


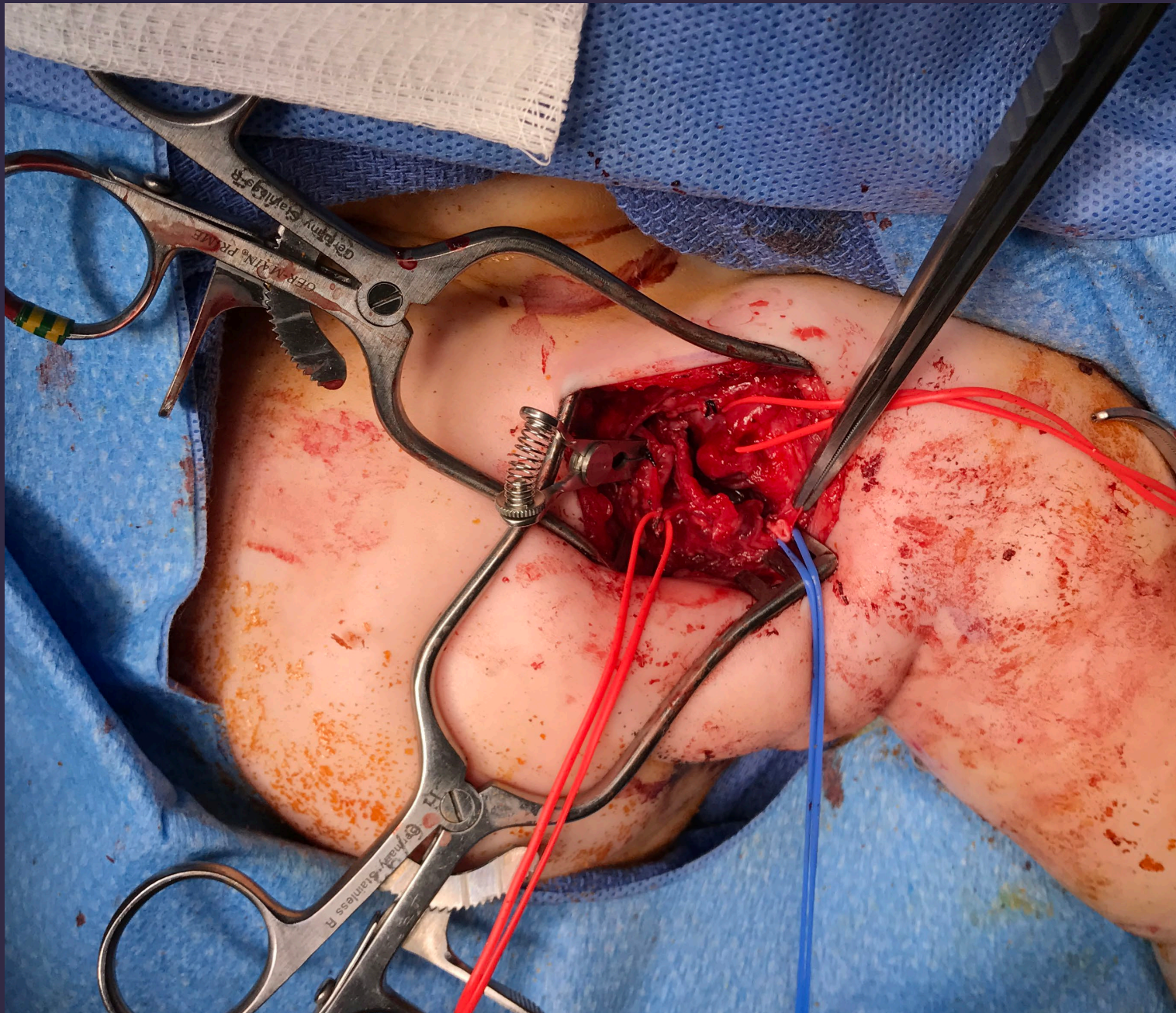


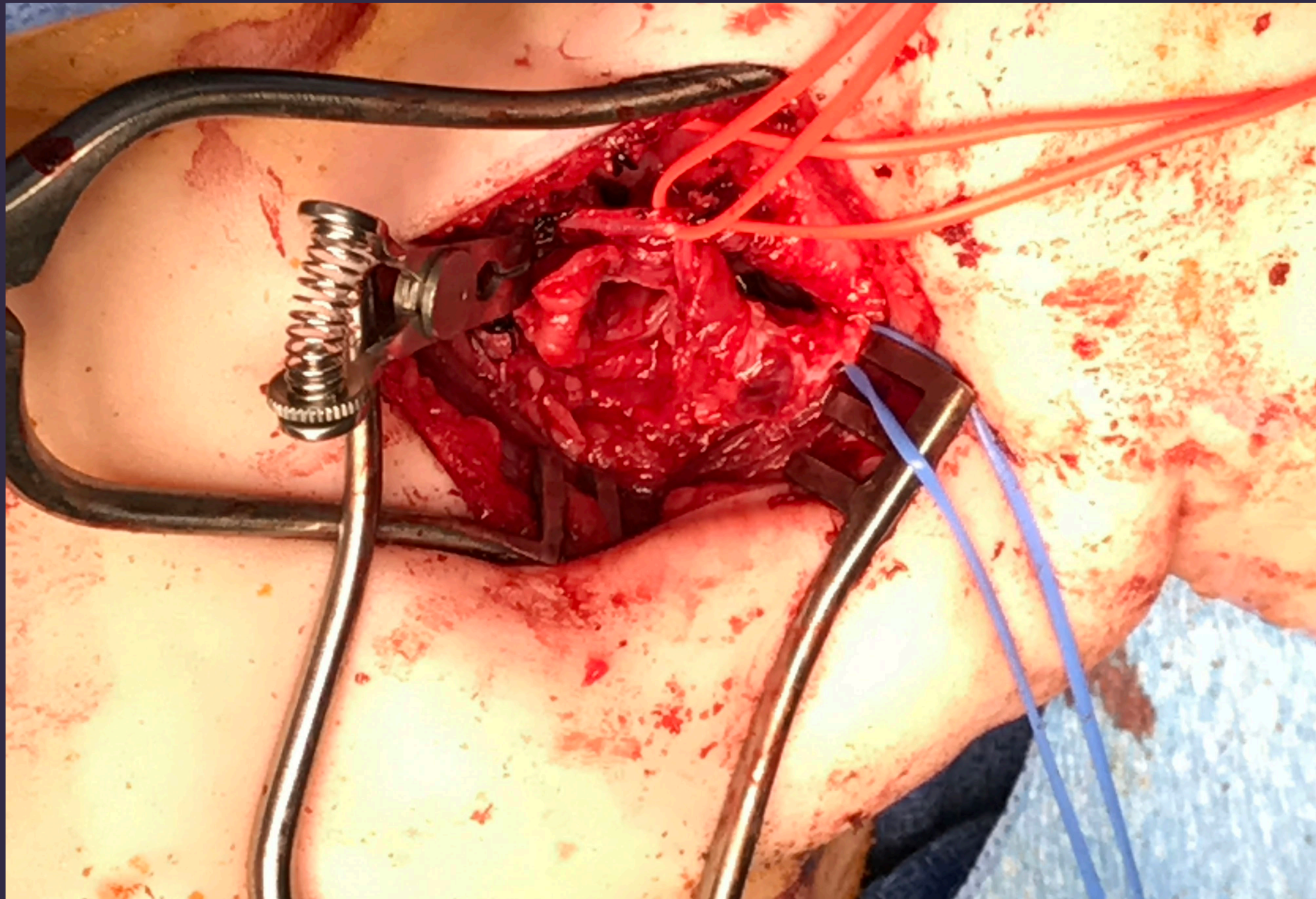


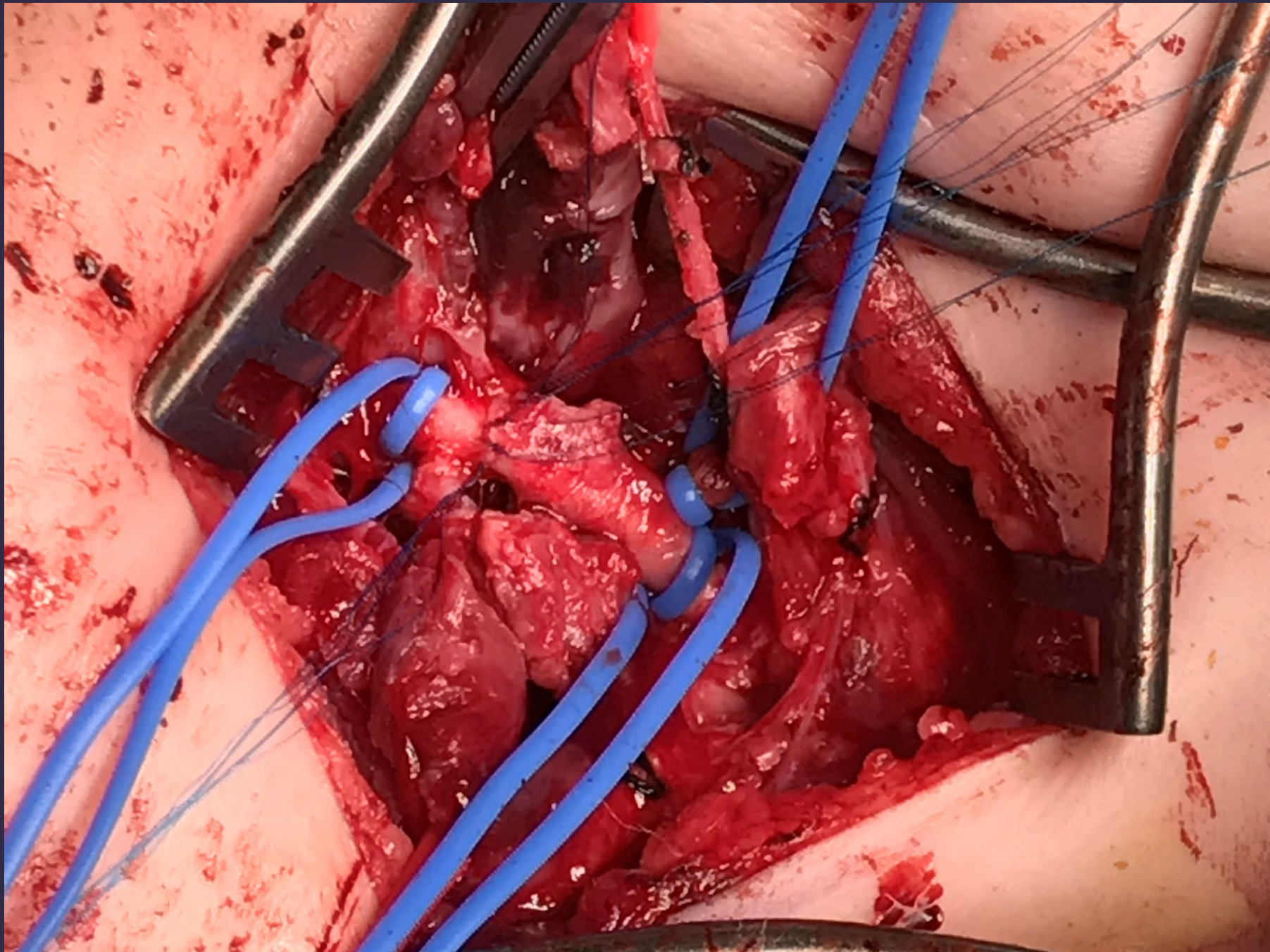


# Operative Repair









# Post Op

- Palpable radial pulse
- Off heparin POD 1
- Downgraded to floor POD 2
- Discharged to home POD 3
- Pt. is currently 4 years old and growing normally
- No signs of vessel abnormalities



# Research

[Ann Vasc Surg](#). 2017 May;41:279.e1-279.e3. doi: 10.1016/j.avsg.2016.09.030. Epub 2017 Feb 28.

## **Surgical Repair of Axillary Artery Aneurysm in a 2-Year-Old Child: A Case Report.**

[Beshish AG](#)<sup>1</sup>, [Arutyunyan T](#)<sup>2</sup>.


[Pediatric Surgery International](#)

August 2004, Volume 20, [Issue 8](#), pp 594–597

## Pseudoaneurysms of the brachial artery following venipuncture in infants

Authors

[Authors and affiliations](#)

Ivo Dzepina, Josip Unusic, Davor Mijatovic, Kresimir Bulic 

## **Brachial pseudoaneurysm of the neonate with partial response to thrombin injections and late spontaneous thrombosis and regression during expectant management**

© 2016 The Authors. Published by the British Institute of Radiology

[Dimitri Parra](#)MD<sup>1</sup> [Ronald Zuker](#)MD<sup>2</sup> [Bairbre Connolly](#)MB, FRCPC<sup>1</sup>

<sup>1</sup>Department of Diagnostic Imaging, Division of Image Guided Therapy, The Hospital for Sick Children, University of Toronto, Toronto, Canada

<sup>2</sup>Department of Plastic Surgery, The Hospital for Sick Children, University of Toronto, Toronto, Canada

# Acknowledgements